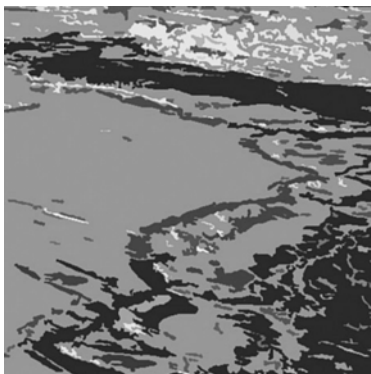


INTERNATIONAL GLACIOLOGICAL SOCIETY

**International Symposium on
Sea Ice in the Physical and
Biogeochemical System**

Tromsø, Norway
31 May - 04 June 2010



Co-sponsored by

Norwegian Polar Institute
Centre for Ice, Climate & Ecosystems (ICE)

and the

University of Tromsø

FIRST CIRCULAR
February 2009
<http://www.igs2010.org>

The International Glaciological Society will hold an International Symposium on Sea Ice in 2010. The symposium will be held in Tromsø, Norway from 31 May to 04 June 2010.

THEME

Sea ice is a relatively fragile part of the Earth system, important for the understanding of a wide range of subjects, from climate, to biodiversity, to society and culture. This symposium will present an opportunity for participants interested in all fields related to sea ice to meet. The suggested topics are intentionally interdisciplinary, including physical, biological, chemical, and socio-economic research on sea ice.

TOPICS

Sea ice in the regional and global climate system, including:

atmosphere-ice-ocean interaction, feedbacks, large-scale observations, Arctic vs. Antarctic, GCM simulations, dynamics, conditions in the past

The role of sea ice in Polar ecosystems, including:

marine mammals, birds, fish, copepods, microorganisms, algae, bacteria

Physical properties of sea ice, including:

growth and decay of sea ice, bulk properties, in-situ measurements, micro physics and models, lab experiments, theoretical approaches

Biogeochemistry and physics of sea ice, including:

brine composition and nutrients, oil and pollutants, iron, carbon and oxygen cycling, gas exchange, dissolved organic matter, black carbon

Sea ice thickness, drift and large-scale circulation, including:

in-situ measurements, remote sensing, and numerical modelling of sea ice thickness, concentration, drift, and ice mechanics

Snow on sea ice, including:

snow thickness and processes, melt ponds, atmosphere-snow interaction, gas exchange, effects for remote sensing

Social, economic and political importance of sea ice, including:

indigenous and local societies in a changing climate, shipping through sea ice, economical use of the Arctic, use of local knowledge

Sea ice research beyond the IPY, including:

international and interdisciplinary studies, legacy of IPY, observational systems, public outreach, education

ABSTRACT AND PAPER PUBLICATION

Participants wishing to present a paper at the workshop are required to submit an abstract. A pre-print of submitted abstracts will be provided for all participants at the symposium. The International Glaciological Society will offer a volume of *Annals of Glaciology* on “Sea ice in the physical and biogeochemical system”, and participants are encouraged to submit manuscripts for this volume.

SYMPOSIUM ORGANISATION

Magnús Már Magnússon (International Glaciological Society)

SCIENCE STEERING AND EDITORIAL COMMITTEE

Victoria Lytle (Chief Editor), Sebastian Gerland

LOCAL ORGANISING COMMITTEE

Sebastian Gerland (chairman), Fred Godtliebsen, Geir Gotaas, Mats Granskog, Stephen Hudson, Nalân Koç, Marcel Nicolaus, Christina A. Pedersen, Keguang Wang and Paul Wassmann

ADDITIONAL ACTIVITIES

A mid-week excursion will be organized for participants to see some of the spectacular scenery around Tromsø. Additionally participants may choose to combine this meeting with the IPY meeting in Oslo the following week (<http://www.ipy-osc.no>), and travel south on the coastal steamer (<http://www.hurtigruten.com/norway>).

FURTHER INFORMATION

If you wish to attend the symposium please return the attached form as soon as possible. The Second Circular will give further information about accommodation, the general scientific program and additional activities, and preparation of abstracts and final papers. Copies of the Second Circular will be sent to those who return the attached reply form. Members of the International Glaciological Society will automatically receive one. Information will be updated on the conference website, <http://www.igs2010.org>, as it becomes available.

INTERNATIONAL SYMPOSIUM ON SEA ICE

Tromsø, Norway, 31 May to 4 June 2010

Family Name: _____

Given Name(s): _____

Address: _____

Tel: _____ Fax: _____

E-mail: _____

I hope to participate in the Symposium in May-June 2010

I expect to submit an abstract

My abstract will be most closely related to the following topic(s):

I would be interested in the coastal steamer tour after the symposium.

PLEASE RETURN AS SOON AS POSSIBLE TO:

Secretary General, International Glaciological Society,
Scott Polar Research Institute,

Lensfield Road,

Cambridge, CB2 1ER

UK

Tel: +44 (0)1223 355 974 Fax: +44 (0)1223 354 931

E-mail: igsoc@igsoc.org Web: <http://www.igsoc.org>